

Welcome

IML

Cédric Buche

ENIB

1^{er} août 2022

- 1 Topics & Challenges
- 2 Location
- 3 Exams
- 4 Calendar
- 5 Human Computer Interaction (HCI)
- 6 Interactive Machine Learning (IML)

Topics & Challenges

▷ Machine Learning

The Facebook logo, consisting of the word "facebook" in white lowercase letters on a blue rectangular background.

▷ Applications

- ◇ Voice recognition
- ◇ Spam detection
- ◇ Stock market
- ◇ Play chess
- ◇ Self driving cars

Topics & Challenges

- ▶ Machine learning
 - ◇ Useful
 - ◇ Looks pretty complicated
 - ◇ IML : pretty easy + a lot of fun

- ▶ Interaction



Location



Exams

- ▷ exam
- ▷ project



Resources

- ▶ Calendar/Documents : <https://www.enib.fr/~buche/data/IML/>
- ▶ Contact : buche@enib.fr

Calendar

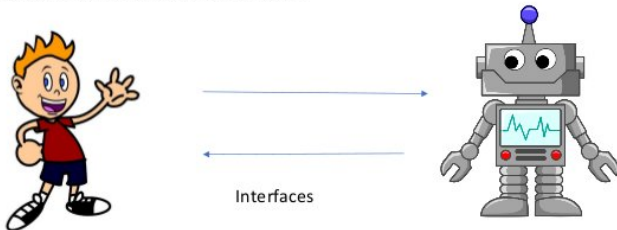
<https://www.enib.fr/~buche/data/IML/schedule.html>

- 1 Topics & Challenges
- 2 Location
- 3 Exams
- 4 Calendar
- 5 Human Computer Interaction (HCI)**
- 6 Interactive Machine Learning (IML)

HCI

HCI :

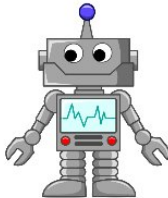
Communication between a human user and a computer system, referring in particular to the use of input/output devices with supporting software



HCI



Vision : eyes
Sound : Ears
Touch : Body
Smell : Nose
Taste : Tongue



Vision : Camera
Sound : Micro/speaker
Touch : Keyboard/Mouse

- 1 Topics & Challenges
- 2 Location
- 3 Exams
- 4 Calendar
- 5 Human Computer Interaction (HCI)
- 6 Interactive Machine Learning (IML)**

- ▶ Autonomous machine learning systems : often require intense engineering effort to be effective
- ▶ How machines can interact with people to solve problems more efficiently than autonomous systems ?
 - ◊ Humans interacting with robots to teach them to perform tasks
 - ◊ Humans helping virtual agents play video games given feedback on their performance
 - ◊ ...

IML

▷ Domain :

- ◇ Machine Learning
- ◇ Artificial intelligence
- ◇ Human-computer interaction
- ◇ Cognitive science
- ◇ Robotics



Welcome

IML

Cédric Buche

ENIB

1^{er} août 2022